

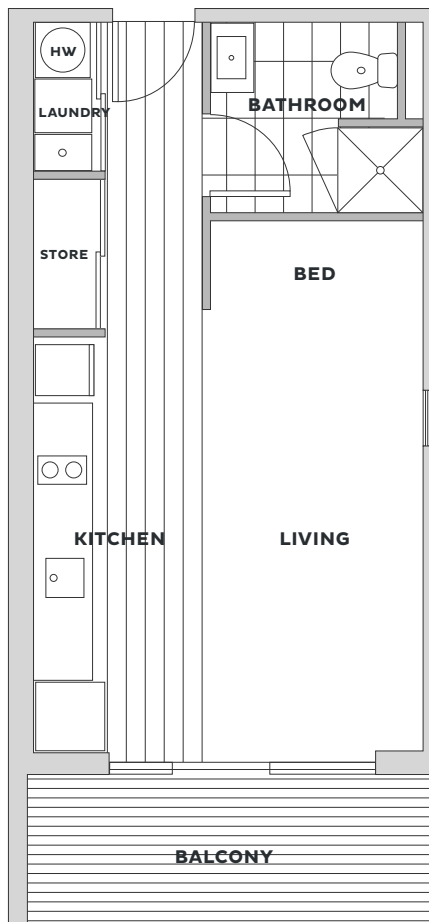
Type A — Studio

\$370 PER WEEK



FLOOR PLAN

FLOOR AREA 32m²



FEATURES

- Quality kitchen fit-out with Fisher and Paykel dishwasher, pull-out bins and engineered stone benchtop
- Spacious bathroom with floor-to-ceiling tiling and wall-hung cabinetry
- Shelving system in wardrobe
- Panel heater and digitally controlled ventilation system
- Balcony
- Storage locker
- Cold water included

Whiteware included

- Washer / Dryer
- Fridge / Freezer
- Dishwasher

Accessibility

- 910mm entry door width
- 100mm kickplate
- Top opening oven
- Step into shower cubical

Disclaimer: The photos, designs and information shown in this document and all other marketing materials for the Te Mātāwai development are for illustrative purposes only and are not intended as a warranty or representation by Kāinga Ora. This material is subject to change and is provided to assist you with obtaining information about the property. It is not intended that you rely solely on this information and you should conduct your own investigation. This could be legal, technical or any other advice relating to the property or information on the property.

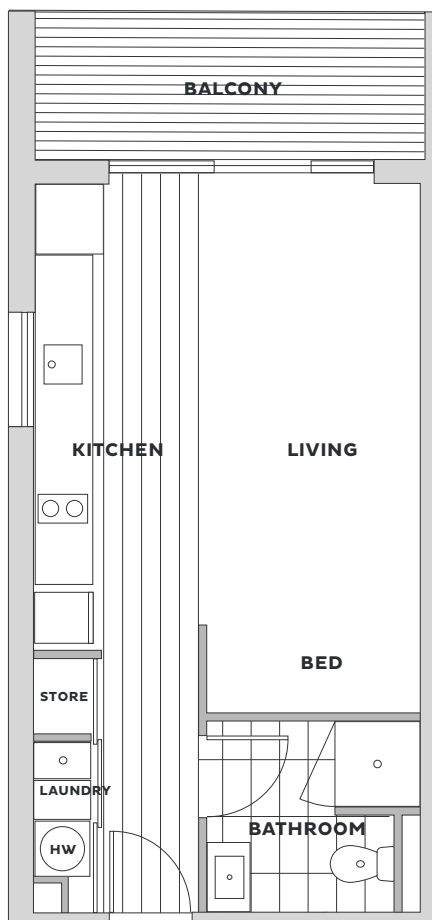
Type F — Studio

\$370 PER WEEK



FLOOR PLAN

FLOOR AREA 31m²



FEATURES

- Quality kitchen fit-out with Fisher and Paykel dishwasher, pull-out bins and engineered stone benchtop
- Spacious bathroom with floor-to-ceiling tiling, wall-hung cabinetry and clothes washer and dryer
- Shelving system in wardrobe
- Panel heater and digitally controlled ventilation system
- Balcony
- Storage locker
- Cold water included

Whiteware included

- Stacked Washer / Dryer
- Fridge / Freezer
- Dishwasher

Accessibility

- 910mm entry door width
- 100mm kickplate
- Top opening oven
- Step into shower cubical

Disclaimer: The photos, designs and information shown in this document and all other marketing materials for the Te Mātāwai development are for illustrative purposes only and are not intended as a warranty or representation by Kāinga Ora. This material is subject to change and is provided to assist you with obtaining information about the property. It is not intended that you rely solely on this information and you should conduct your own investigation. This could be legal, technical or any other advice relating to the property or information on the property.